



GOES THROUGH IT



Simpson[®]

\$10.00

When you have discerning taste, you put a lot of thought into the things you select in life. You strive to capture a smart design, as well as make smart decisions. Simpson's Selects Series

is an array of charismatic doors, delivering great value, highlighted by a range of tasteful decorative glass configurations. Create a door that heeds your style, and your sensibility.



LIFE
GOES THROUGH IT



SELECTS SERIES



se·lect ^{adj.}

*singled out in preference;
a choice that makes you
feel good*

Venetia® IV 4244 | shown in fir



selects series

AVAILABLE OPTIONS INSIDE

Open to learn how this custom door was created.

“OUR DOOR”

[STEP-BY-STEP]

YOUR LIFE. YOUR DOOR.

[OPTIONS]

Remember, you can make a number of adjustments to the doors you see in this catalog to create the perfect door for your home. A few parameters you might want to consider are outlined below, and more ideas can be found at simpsondoor.com.



WOOD

There are no limits. You can choose from an array of species, from traditional to exotic, each meeting our strict grading standards.



SIZE

To obtain the ideal overall size for you, choose your door height, width, thickness, and different components such as sidelights and transoms.



CAMING

From silver to black to brass, opt for the style of caming that best complements your style.



PRIVACY

Choose a level of glass privacy, on a scale of 1 to 10, ranging from completely transparent to completely private.

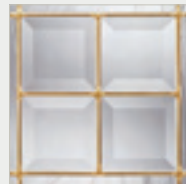


GLASS IDEAS

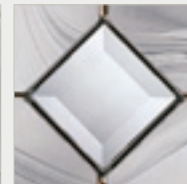
The glass can indeed make the door. Choose from our extensive inventory of gorgeous decorative glass. Please see a few examples of our most popular glass designs below, and for more ideas visit us at simpsondoor.com.



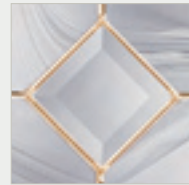
4234 | black



4224 | brass



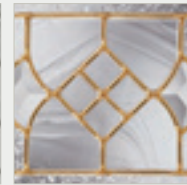
4245 | black



4244 | brass



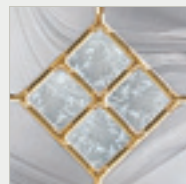
4232 | black



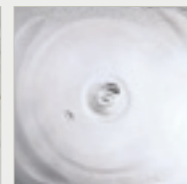
4222 | brass



4243 | black



4242 | brass



4230 | bullion

“As native New Englanders, we always knew the home we’d finally settle down in would be a traditional saltbox style home. So we needed a door that we felt best fit this classic style.”

— *The Wilkersons, Manchester, NH*



Do you want to create this door?
Here’s how they did it:

STEP 1

“First we chose a traditional Selects Series design to replace the steel door that was on the house.”

STEP 2

“We knew we had various glass choices, and our dealer recommended bullion glass – a look, he informed us, that was actually popular back in the time of the original 13 colonies.”

STEP 3

“He was right on, as it was an excellent fit. And the perfect fit for our life.”

Caution: Dark colored stain or paint is not recommended on doors exposed to sunlight. It may cause excessive heat build up in the door that may deteriorate your door’s finish quicker and cause expansion and contraction of door components. For care & finishing recommendations, visit simpsondoor.com.

When you go down the path of choosing a Selects Series door, the result is remarkable.



Venetia® II

Black caming | 4234 door, 4235 sidelights



St. Tropez II

Brass caming | 4222 door, 4223 sidelights



YOUR LIFE. YOUR DOOR. | KEY

See more information on pages 6–11.



Any Wood



Any Size



Glass Options



Caming Choices



Privacy Rating



Venetia® IV 
Brass caming | 4244 door, 9540 dentil

St. Tropez IV 
Brass caming | 4242 door



St. Tropez IV
St. Tropez IV 4243 | shown in fir with 4233 sidelight and 4733 transom

4230 
Bullion glass



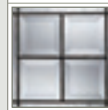
4226 
Clear Insulated Glass



options

Your Options

Highlight | caming +
You have caming and glass options that give the door distinctly different feels. For more information, visit simpsondoor.com.



Venetia II

+ Caming	black	brass
Door	4234	4224
Sidelight	4235	4225
Transom (3'0")	4748	4744
Transom (6'0")	4734	4745



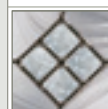
Venetia IV

+ Caming	black	brass
Door	4245	4244
Sidelight	4235	4225
Transom (3'0")	4734	4745
Transom (6'0")	4734	4745




St. Tropez II


+ Caming	black	brass
Door	4232	4222
Sidelight	4233	4223
Transom (3'0")	4737	4742
Transom (6'0")	4733	4743



St. Tropez IV

+ Caming	black	brass
Door	4243	4242
Sidelight	4233	4223
Transom (3'0")	4733	4743
Transom (6'0")	4733	4743

Highlight | glass 
The glass makes the door—so choose your design wisely. For more, visit simpsondoor.com.

	Glass	bullion	clear	beveled
2 lite inserts		4230	4226	4228
4 lite inserts		4231	4246	

Transom not shown. See (4733 transom) photo on this page.



Life

LIFE | GOES THROUGH IT

simpsondoor.com | 1.800.SIMPSON
400 Simpson Avenue, McCleary, WA 98557

©2008 Simpson Door Company. Printed in USA. Brochure and door designs covered by copyright. Unless otherwise noted, all proprietary names are trademarks of Simpson. All rights reserved.
Reorder #9555. February 2008.

Simpson[®]